

# Remote Control

CEILING FAN REMOTE CONTROL  
SKU: 082-01

MODEL: RC-82T&RC-82R



Read and Save These Instructions

## WARNINGS

This device complies with part 15 of the FCC Rules. Operation is subject to the following two conditions: (1) this device may not cause harmful interference, and (2) this device must accept any interference received, including interference that may cause undesired operation.

This device complies with RSS-210 of Industry Canada. Operation is subject to the following two conditions: (1) this device may not cause interference, and (2) this device must accept any interference, including interference that may cause undesired operation of the device.

This equipment has been tested and found to comply with the limits for a Class B digital device, pursuant to Part 15 of the FCC Rules. These limits are designed to provide reasonable protection against harmful interference in a residential installation. This equipment generates, uses and can radiate radio frequency energy and, if not installed and used in accordance with the instructions, may cause harmful interference to radio communications. However there is no guarantee that interference will not occur in a particular installation. If this equipment does cause harmful interference to radio or television reception, which can be determined by turning the equipment off and on, the user is encouraged to try to correct the interference by one or more of the following measures: Reorient or relocate the receiving antenna, Increase the separation between the equipment and receiver, Connect the equipment into an outlet on a circuit different from that to which the receiver is connected. Consult the dealer or an experienced radio/TV technician for help. Note: Any changes or modifications to the transmitter or receiver not expressly approved by our Company may void one's authority to operate this remote control. Chemical burn hazard. Keep batteries away from children. This remote use a lithium button cell battery. If a new or used lithium button/coin cell battery is swallowed or enters the body, it can cause severe internal burns and can lead to death in as little as 2 hours. Always completely secure the battery compartment. If the battery compartment does not close securely, stop using the product, remove the batteries, and keep it away from children. If you think batteries might have been swallowed or placed inside any part of the body, seek immediate medical attention. Dispose of cells properly and keep away from children. Even used cells may cause injury.

If you are installing multiple remote-controlled fans on the same circuit breaker,

you may need to perform a few extra steps to prevent interference or faulty operation of your remote controls.

For more information, please contact the customer service of the store you purchased, or mail to: [support@ceilingfanremote.com](mailto:support@ceilingfanremote.com).

## Installation

- 1 Turning off the power**  
Before installation, use the pull chains to set the fan speed to HIGH and the light to ON. Ensure the power is OFF at the outlet box and wall switch location before proceeding with installation.



## WARNING

To avoid possible electrical shock, before installing your fan, disconnect the power by turning off the circuit breakers to the outlet box associated with the wall switch location.

- 2 Removing the canopy**

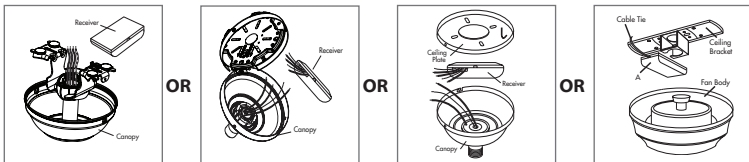
Remove the canopy. If uncertain how to remove it, reference the fan's owner's manual. With wiring exposed, it may be helpful to note existing wire connections or take a digital photo for reference. Remove the wire connectors that connect the wires from the outlet box to the fan, leaving the grounding wires connected.



- 3 Installing the receiver**

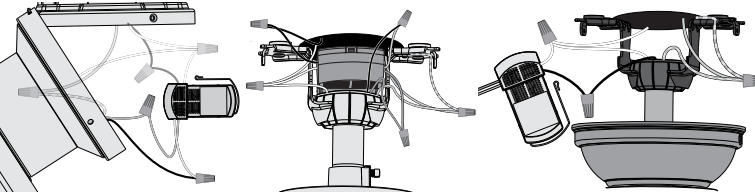
Choose the hanging system that most closely resembles the one used by your fan, and install the receiver and wire as directed.

You may have installation issues if the fan is installed on an angled ceiling. For assistance, mail to [support@ceilingfanremote.com](mailto:support@ceilingfanremote.com).



**Note:** Some fans may have considerable excess lead wire. For easier canopy installation, cut the excess wire, leaving a minimum of 8" remaining. Re-strip the fan lead wires 1/2". Place remaining excess wire into the ceiling electrical box. **The bracket and fan must remain properly grounded.**

## Examples of receiver connections



## Wiring

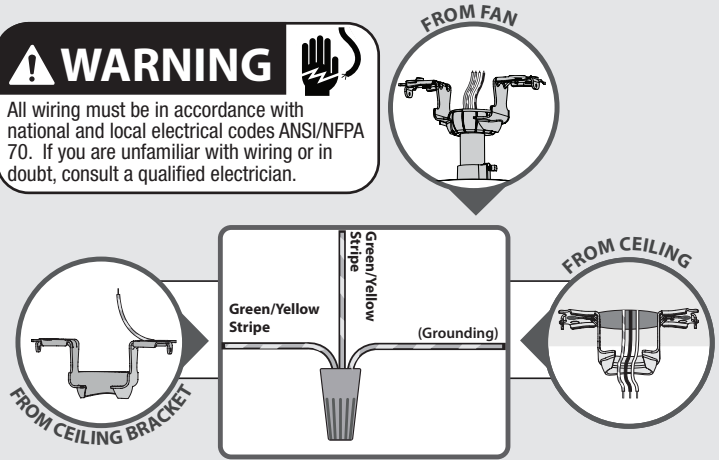
**Note:** If you are uncertain about wire colors or connections, please contact a qualified electrician.

- 4 Connecting the ground wires**

Using an orange wire connector, connect the 3 grounding wires (green, green/yellow stripe, or bare copper) coming from the ceiling, downrod, and hanging bracket.

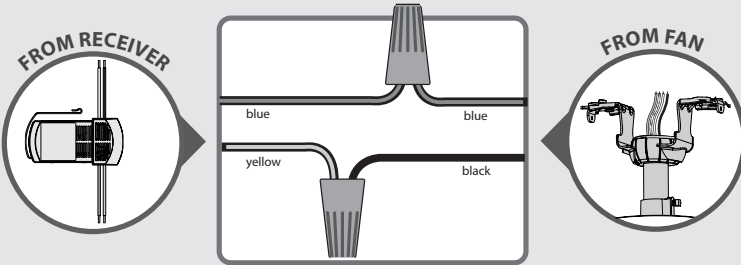
## WARNING

All wiring must be in accordance with national and local electrical codes ANSI/NFPA 70. If you are unfamiliar with wiring or in doubt, consult a qualified electrician.



- 5 Wiring the receiver to the fan (continued)**

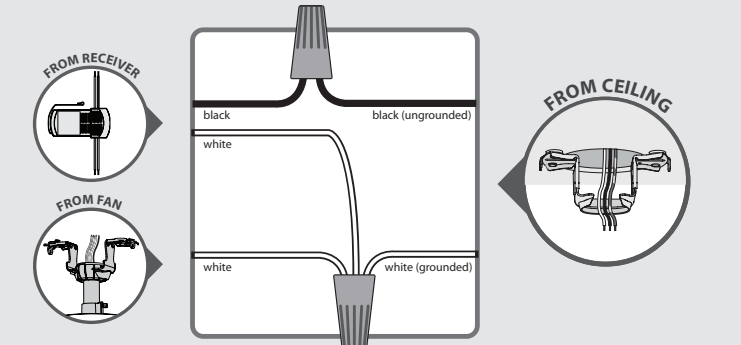
Using the orange wire connectors, connect the blue wire from the receiver to the blue wire (or possibly black with white stripe wire) from the fan. Connect the yellow wire from the receiver to the black wire from the fan.



- 6 Wiring the receiver and fan to the ceiling**

Using the orange wire connectors, connect the black wire (ungrounded) from the ceiling to the black wire from the receiver. Connect the white wire (grounded) from the ceiling to both the white wire from the receiver and the white wire from the fan.

**AFTER ALL WIRES ARE CONNECTED** and secured with wire connectors, re-install the canopy.

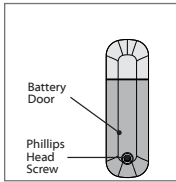


Turn the splices upward and push them carefully back through the hanger bracket into the outlet box. Spread the wires apart, with the grounded wires on one side of the outlet box and the ungrounded wires on the other side of the outlet box.

- 7 Installing the battery**

To access the battery compartment, remove the small Phillips head screw that secures the battery door to the remote control.

Replace the used battery with a CR2032 battery when necessary. The battery should be installed with the positive (+) side up.



- 8 Turning on the power**

## IMPORTANT

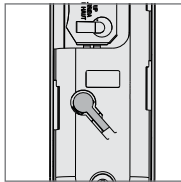


- 9 the products pictures and description on website about the remote function and you can know how to use your control !**

## The remote transmitter is already paired to the receiver and ready to use.

**Note:** If your need to pair your remote, remove the battery door. Cycle power to the fan by turning power off and back on at the wall switch (or circuit breaker if necessary). Within three minutes, press the pair button on the remote.

To prevent faulty operation, please disconnect power from all other ceiling fans within range while pairing.



## Trouble Shooting

### Remote Control of Fan is Erratic

- Make sure the battery is installed correctly.
- Install a fresh battery.

### Multiple Remote Issues

- The remote is synced to the receiver at the factory. Occasionally, power surges can cause the remote to become un-synced. Whenever necessary, follow the syncing instructions below. SYNCING INSTRUCTIONS: Switch the power to the fan off and back on again. Within 30 seconds, press and hold the LEARN buttons, located in the battery compartment for 5 seconds. Fan will turn on at low speed and light off. This confirms the syncing process is successful.

## Remote Functions

### Key Press

### Function



+ Quick Press

Light On/Off



+ Long Press

Light Dimming



+ Quick Press

Fan On/Off



+ Quick Press

Raise Fan Speed



+ Quick Press

Lower Fan Speed

Long Press



Fan High

Long Press



Fan Low

Long Press



+



Dimming Mode On/Off

## Contact Information

Website: [www.ceilingfanremote.com](http://www.ceilingfanremote.com)

Email: [support@ceilingfanremote.com](mailto:support@ceilingfanremote.com)